

ALBAT+WIRSAM

CANTOR PROFESSIONAL 2010.1

CANTOR Professional is ALBAT+WIRSAM's specialist ERP software for producers of windows, doors, and shading systems. The new release 2010.1 offers new modules and functions many users will welcome.

CANTOR Professional was launched in 1994. Especially developed for the window and door industry, ALBAT+WIRSAM offers with this software the leading solution for industrial window production. 2009 has been a year of intensive development for the software; the result is now available with Release 2010.1.

Apart from many radical extensions in the dealer system and order entry, the focus of development has been put on materials management. Although this module has been available for more than ten years now, there was lots of room for new features like the management of general contracts with suppliers, management of the consignment and test stock, and above all the detailed handling of the processing of coloured profiles by external coaters including the management of material stocks while still offering all advantages of a product tailored to the industry. Other new features have been developed by the strategic cooperation with the software product Logical. CANTOR Professional can manage aluminium, steel) but has no special solution when it comes to extending house fronts and conservatories. The direct integration of LogiKal offers to the customers the advantages of both the CANTOR ERP system and of the construction module LogiKal. Special improvements for the processing of front doors, door leaves, and casement-covering fillings were set on the 2009 task list for the CANTOR programmers as well as the extension of CANTOR CIM, the software system for production and dispatch. CANTOR CIM now offers an extended control of the internal logistics and organisation of dispatch. The program can be used as a small solution with just a few terminals, or on the entire shop floor.

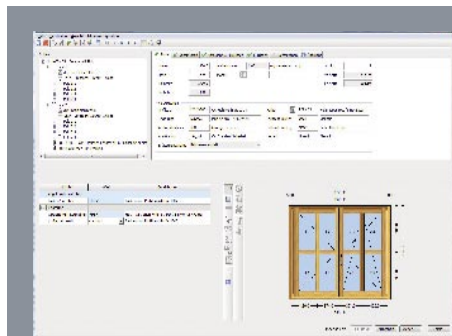
HALLE 1 STAND 231

Albat+Wirsam Software AG
Tel. 06403/970-128
info@cantor-software.de
www.cantor-software.de

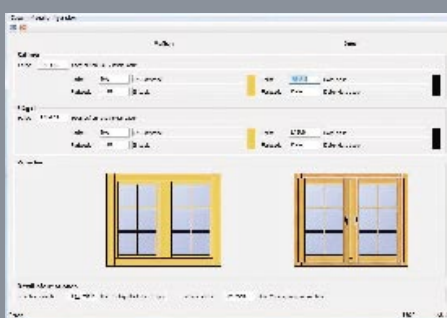
management of material stocks module ranks among the big

OrgaData and the integral materials (wood, PVC-U, aluminium constructions CANTOR's order entry of

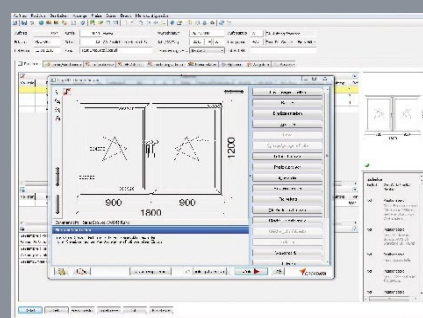
LogiKal. Special improvements for the processing of front doors, door leaves, and casement-covering fillings were set on the 2009 task list for the CANTOR programmers as well as the extension of CANTOR CIM, the software system for production and dispatch. CANTOR CIM now offers an extended control of the internal logistics and organisation of dispatch. The program can be used as a small solution with just a few terminals, or on the entire shop floor.



In der Detailmaske der Auftragserfassung werden dem Mitarbeiter alle relevanten Daten zur Position auf einen Blick dargestellt.



Ob Farb- oder Materialwechsel bei Holz, die optische Darstellung der ausgewählten Optionen verhindert Erfassungsfehler.



Die Positionserfassung aus Logikal für umfangreicher Aluminiumkonstruktionen bindet sich nahtlos in das ERP-System von Cantor ein.

ORGADATA-NETZWERK

LOGIKAL-CANTOR-INTEGRATION

Integration is the new magic word for the software industry. A recent example of integration is that of the software system LogiKal by Orgadata in the Cantor ERP solution.

An interface transfers data from one software to another. With integration, the user can use the strengths of another software without having to leave his own platform. „The user does not even notice that he is working with a different software“, Orgadata's boss Bernd Hillbrands puts it in a nut-shell. Cantor and LogiKal are market leaders in the field of systems for the door-, window- and house front producing industry - LogiKal with regard to aluminium and steel and Cantor for comprehensive ERP solutions for producers and resellers of PVC-U and wooden windows and front doors. LogiKal's strengths include the provision of extensive profile and fittings master data that can be accessed by Cantor. With the help of these data, doors, windows, and house fronts can be designed.

There is an immense variety of fittings and profiles. Only in Germany, 14 team are occupied by entering and updating the products of many leading factories. World-wide, there are more than 40 persons doing the same. is one of our core competences“, says Hillbrands. Master data management lots of specialist know-how.

With LogiKal, Cantor users cannot only use the technical master data for aluminium and steel constructions for house fronts and conservatories. From element prices entered in the Orgadata system are more than useful. Networking is part of Orgadata's business philosophy. „Customers shall be integrated in the interaction of all partners that are important for his business“, states Hillbrands. This is why Orgadata does not only keep in close contact with profile and fittings manufacturers but also with machinery producers. This permits the safe and easy control of CNC machinery.

The Orgadata network also includes other software suppliers. „Cooperation will help our customers to adapt the software to their individual needs“, this is how Hillbrands describes the added value of this cooperation.“

HALLE 7 STAND 319

Orgadata AG
Tel. 0491/927-827
info@orgadata.com
www.orgadata.com

members of the Orgadata profile and fittings manufacturer. „The know-how of our staff at Orgadata requires

designing complex aluminium order entry to invoicing, the